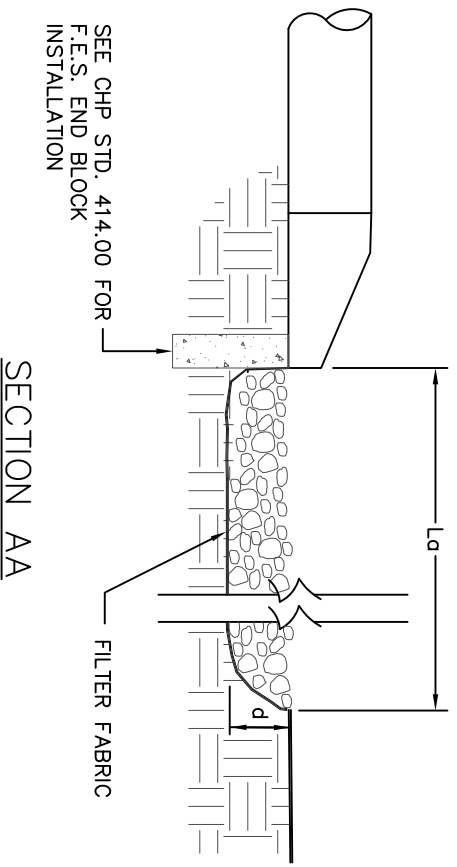


PLAN



SECTION AA

- NOTES:
1.  $L_d$  IS THE LENGTH OF THE RIPRAP APRON.  $L_d$  IS CALCULATED FROM THE NC EROSION AND SEDIMENT CONTROL PLANNING AND DESIGN MANUAL, APPENDIX 8.06.1.
  2.  $d = 1.5$  TIMES THE MAXIMUM STONE DIAMETER BUT NOT LESS THAN 6"
  3. IN A WELL-DEFINED CHANNEL, EXTEND THE APRON UP THE CHANNEL BANKS TO AN ELEVATION OF 6" ABOVE THE MAXIMUM TAILWATER DEPTH OR TO THE TOP OF THE BANK, WHICHEVER IS LESS.
  4. A FILTER BLANKET OR FILTER FABRIC SHOULD BE INSTALLED BETWEEN THE RIPRAP AND SOIL FOUNDATION.

CITY OF HIGH POINT  
 NORTH CAROLINA  
 ENGINEERING SERVICES DEPARTMENT  
 APPROVED... FEBRUARY 17, 2009  
 BSK  
 DIRECTOR

ISSUED 2-17-09  
 REVISIONS

STANDARD DRAWING FOR  
**PIPE OUTLET PROTECTION**  
 FOR PIPE FLOWING FULL WITH MAXIMUM TAILWATER CONDITION

OUTPROTDEF.DWG

616.00  
 SHEET 1 OF 1