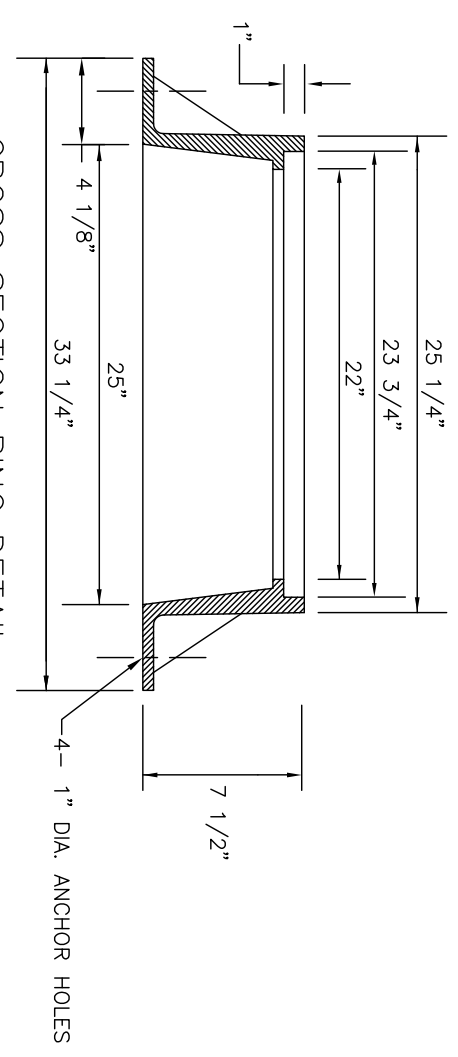
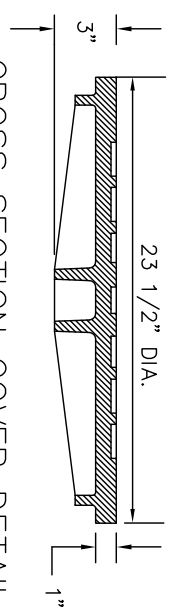


COVER TOP AND BOTTOM DETAIL



CROSS SECTION RING DETAIL



CROSS SECTION COVER DETAIL

COVER FACE

- NOTES:
- A. MINIMUM AVERAGE WEIGHT:
COVER 125 LBS.
FRAME 190 LBS.
 - UNIT 315 LBS.
 - B. MANHOLE RING AND COVERS SHALL BE MADE OF GRAY CAST IRON AND SHALL CONFORM TO AASHTO M105 AND ASTM A48, CLASS 35B.
 - C. RING & COVER SHALL HAVE MACHINED SEATS.
 - D. APPROVED RING & COVERS
 - 1. US FOUNDRY & MFG. CORP. RING USF 669, COVER TYPE-KY.
 - 2. EAST JORDAN IRON WORKS RING V-1384-1, COVER V-1384.
 - 3. APPROVED EQUAL.

<p>CITY OF HIGH POINT NORTH CAROLINA ENGINEERING SERVICES DEPARTMENT</p> <p>APPROVED: MAY 3, 2007 <i>BK</i> CITY ENGINEER</p>	<p>ISSUED 5-3-07</p> <table border="1" style="width: 100%; border-collapse: collapse;"> <tr> <th style="width: 50%;">REVISIONS</th> <th style="width: 50%;"></th> </tr> <tr> <td> </td> <td> </td> </tr> <tr> <td> </td> <td> </td> </tr> <tr> <td> </td> <td> </td> </tr> </table>	REVISIONS							
REVISIONS									
<p>UTILITY MANHOLE RING AND COVER FOR ROADWAY APPLICATIONS</p>	<p>STANDARD DRAWING FOR</p>								
<p>RC_SEAL.DWG 307.00</p>	<p>SHEET 1 OF 1</p>								