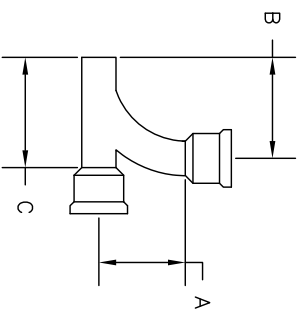
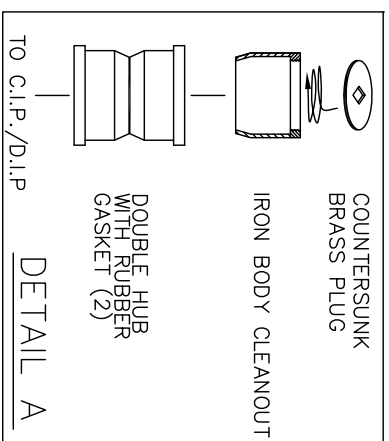


SIZE (IN)	A (IN)	B (IN)	C (IN)	WEIGHT (LBS)
4 X 4	9	12 1/16	12	20
6 X 4	10	12	12	25
6 X 6	12 7/8	16 1/16	15	35



LONG TURN SWEEP COMBINATION WYE & EIGHTH BEND



**NOTES:**

1. ALL SERVICE LATERALS SHALL BE CAST IRON SOIL PIPE, EPOXY LINED DUCTILE IRON SEWER PIPE, PC 350, MAY BE REQUIRED BY THE ENGINEER IN AREAS OF SHALLOW DEPTHS (0-3') OR IN DEPTHS WHERE THE MAIN IS CONSTRUCTED OF DUCTILE IRON PIPE.
2. CLEAN OUTS ARE TO BE SET IN THE 30" (2.5') UTILITY STRIP, AS MEASURED FROM THE BACK OF CURB, OR ONE FOOT (1') INSIDE THE RIGHT-OF-WAY LINE FOR RIBBON PAVEMENT ROADS. ANY VARIANCE MUST BE APPROVED BY THE ENGINEERING SERVICES DEPT. OR STATED IN THE CONTRACT DOCUMENTS.
3. IN LIEU OF A WYE, THE SERVICE MAY BE CONNECTED TO THE MAIN BY USING A TAPPING MACHINE AND SADDLE APPROVED BY THE ENGINEERING SERVICES DEPARTMENT.
4. UNDER NO CIRCUMSTANCES SHALL A BEND BE PLACED IN ANY SECTION OF A SEWER SERVICE LATERAL WITHOUT PERMISSION OF THE ENGINEERING SERVICES DEPT.
5. "NO HUB BAND" CLAMPS WILL NOT BE ALLOWED ON THE CITY SERVICE. INSTEAD, A DOUBLE HUB PIPE SECTION SHALL BE USED.
6. THE DITCH SHALL BE COMPACTED IN SIX INCH (6") LAYERS WITH A MECHANICAL TAMP.
7. SEE THE ABOVE DETAIL FOR DIMENSIONS OF APPROVED COMBINATION WYE AND EIGHTH BEND. APPROVED MANUFACTURERS INCLUDE:  
 - CHARLOTTE PIPE, MODEL NUMBER "SV-33"  
 (LONG TURN PATTERN).  
 - OR APPROVED EQUAL

CITY OF HIGH POINT  
 NORTH CAROLINA  
 ENGINEERING SERVICES DEPARTMENT  
 APPROVED: MAX 3, 2007  
 DIRECTOR

ISSUED 5-3-07  
 REVISIONS

STANDARD DRAWING FOR  
 SANITARY SEWER SERVICE (REHAB)  
 FOR VCP AND DIP SANITARY MAINS

SER\_CI\_RHB.DWG  
 320.00  
 SHEET 1 OF 1