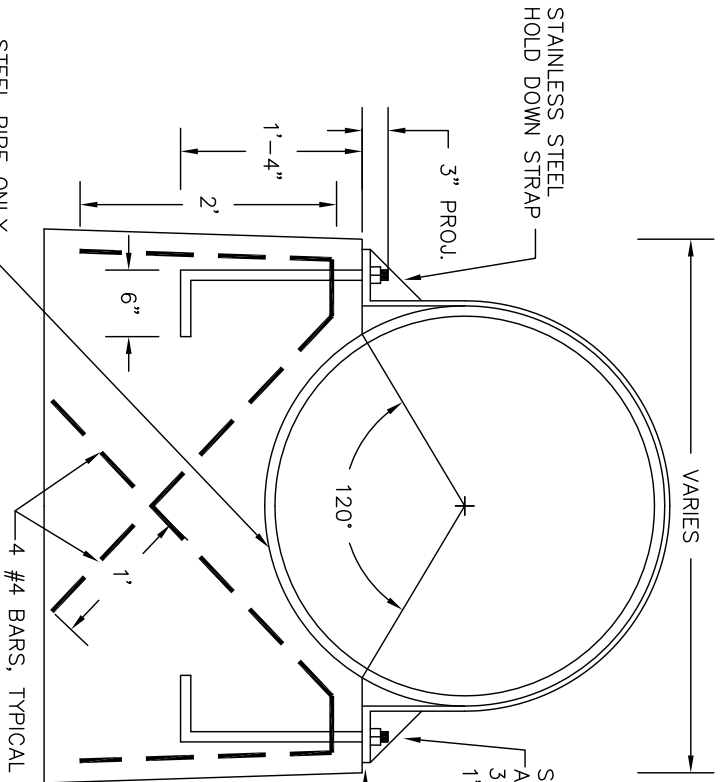


SLOTTED HOLES
 15/16" x 1 15/16" FOR 3/4" DIA. BOLTS
 1 3/16" x 2 3/16" FOR 1" DIA. BOLTS

PLAN

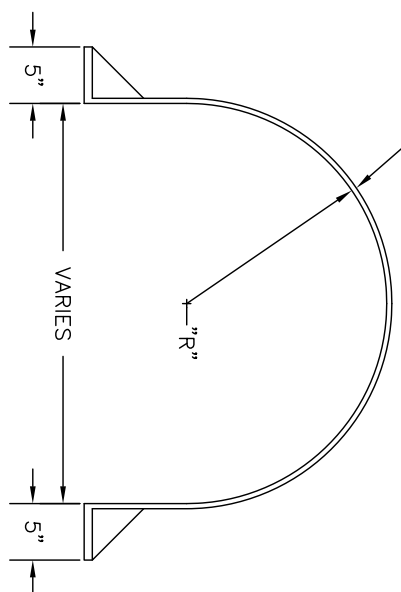


STAINLESS STEEL HOLD DOWN STRAP
 3" PROJ.
 1'-4"
 2'
 6"
 120°
 4 #4 BARS, TYPICAL

STAINLESS STEEL ANCHOR BOLTS-
 3/4" DIA. FOR 8"-24" DIA. PIPE
 1" DIA. FOR > 24" DIA. PIPE

STAINLESS STEEL SHIMS
 AS REQUIRED

3/8" THICK FOR 8"-24" DIA.
 1/2" THICK FOR > 24" DIA.



SECTION

STEEL PIPE ONLY
 LINE SADDLE WITH 4 LAYERS 30# TARRED FELT.
 PLACE GRAPHITE BETWEEN EACH LAYER
 AS DIRECTED BY ENGINEER.

CITY OF HIGH POINT
 NORTH CAROLINA
 ENGINEERING SERVICES DEPARTMENT

ISSUED 5-3-07
 REVISIONS
 APPROVED MAY 3, 2007
 BSK
 DIRECTOR

STANDARD DRAWING FOR
SADDLE AND HOLD DOWN STRAP
 FOR AERIAL SEWER AT PIER

AERIALSTRAP.DWG

325.00

SHEET 1 OF 1