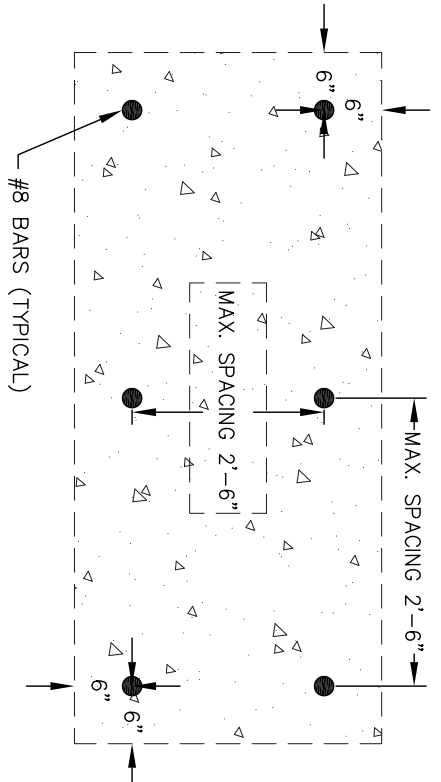


PLAN VIEW



BOTTOM VIEW

- NOTES:
1. MINIMUM THICKNESS OF FOOTING ABOVE ROCK TO BE SAME AS BASE THICKNESS OF PIER OR AS OTHERWISE SHOWN.
 2. MAT STEEL FOR FOOTING SHALL BE TIED TO #8 BARS.
 3. CONCRETE SHALL BE CLASS A, 3000 PSI.
 4. THE EPOXY USED FOR EMBEDDING THE REBAR INTO THE ROCK SHALL MEET THE REQUIREMENTS OF TYPE 3A EPOXY SPECIFIED IN ARTICLE 1081-1 OF THE CURRENT NCDOT STANDARD SPECIFICATIONS FOR ROADS & STRUCTURES.

CITY OF HIGH POINT
 NORTH CAROLINA
 ENGINEERING SERVICES DEPARTMENT

APPROVED: MAX 3, 2007
 DIRECTOR

ISSUED	5-3-07
REVISIONS	

STANDARD DRAWING FOR
PIER FOOTING ABOVE ROCK
 FOR TYING PIER FOOTING TO ROCK

ROCKFOOTING.DWG
326.00
 SHEET 1 OF 1