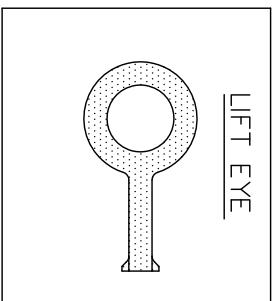
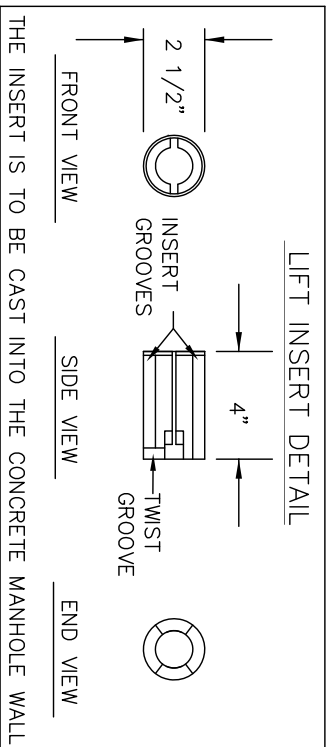
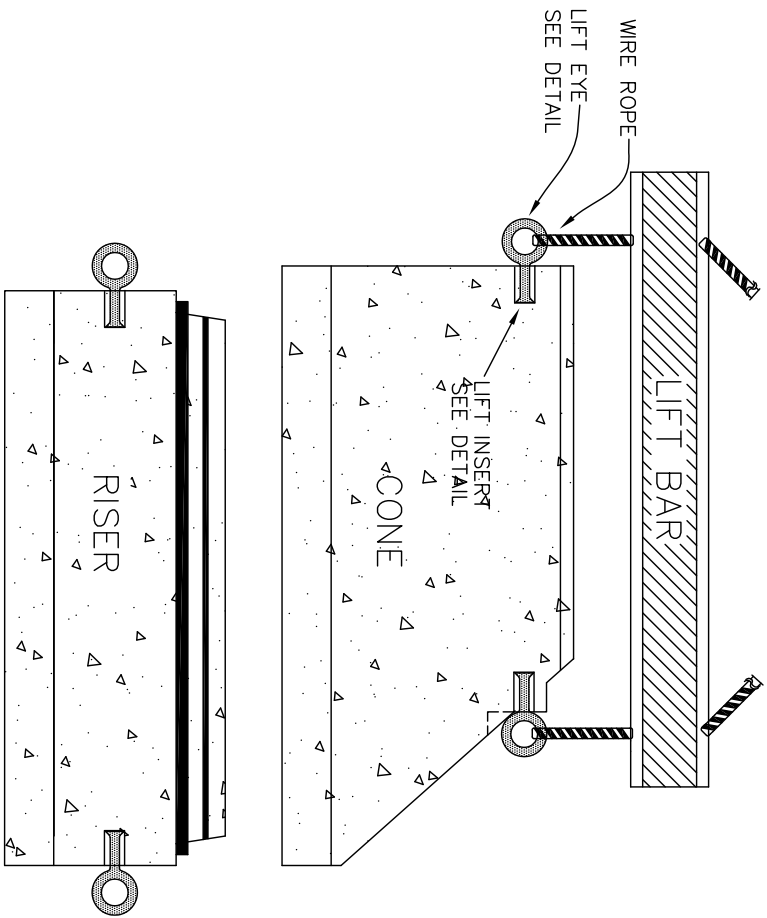


LIFT ASSEMBLY



NOTES:

- A. ALL STANDARD SEWER MANHOLE SECTIONS SHALL MEET OR EXCEED THE REQUIREMENTS OF ASTM C478.
- B. ALL LIFT ASSEMBLY CASTINGS SHALL BE MADE OF CAST OR FORGED STEEL AND RATED TO LIFT THE SECTION.
- C. THE INSERT SHALL BE MADE OF BONDED IMPACT STYRENE, ABS PLASTIC, OR APPROVED ALTERNATIVE.
- D. THE LIFT BAR AND ALL ACCOMPANYING EQUIPMENT SHALL MEET OR EXCEED ALL ASTM AND OSHA REQUIREMENTS FOR SAFETY AND PERFORMANCE.
- E. LIFT INSERTS AND HOLES SHALL BE SIZED FOR A PRECISION FIT WITH THE LIFT DEVICES, AND SHALL COMPLY WITH OSHA 1926.704, AND SHALL NOT PENETRATE THROUGH THE MANHOLE WALL.
- F. LIFT INSERTS AND HOLES SHALL BE SEALED WITH NON-SHRINK GROUT PRIOR TO BACKFILLING.
- G. LIFT INSERTS SHALL BE MANUFACTURED BY PRESS SEAL GASKET CORP., M.A. INDUSTRIES, INC, OR APPROVED EQUAL.

CITY OF HIGH POINT
NORTH CAROLINA
ENGINEERING SERVICES DEPARTMENT

APPROVED: MAY 3, 2007
BY: [Signature]
DIRECTOR

ISSUED 5-3-07
REVISIONS

REVISIONS

STANDARD DRAWING FOR

MANHOLE LIFT SECTION

FOR PRECAST CONCRETE MANHOLES

MH_LIFT.DWG

305.00

SHEET 1 OF 1