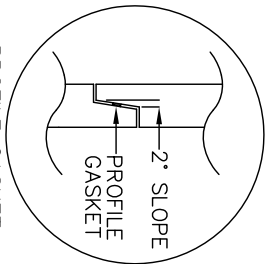
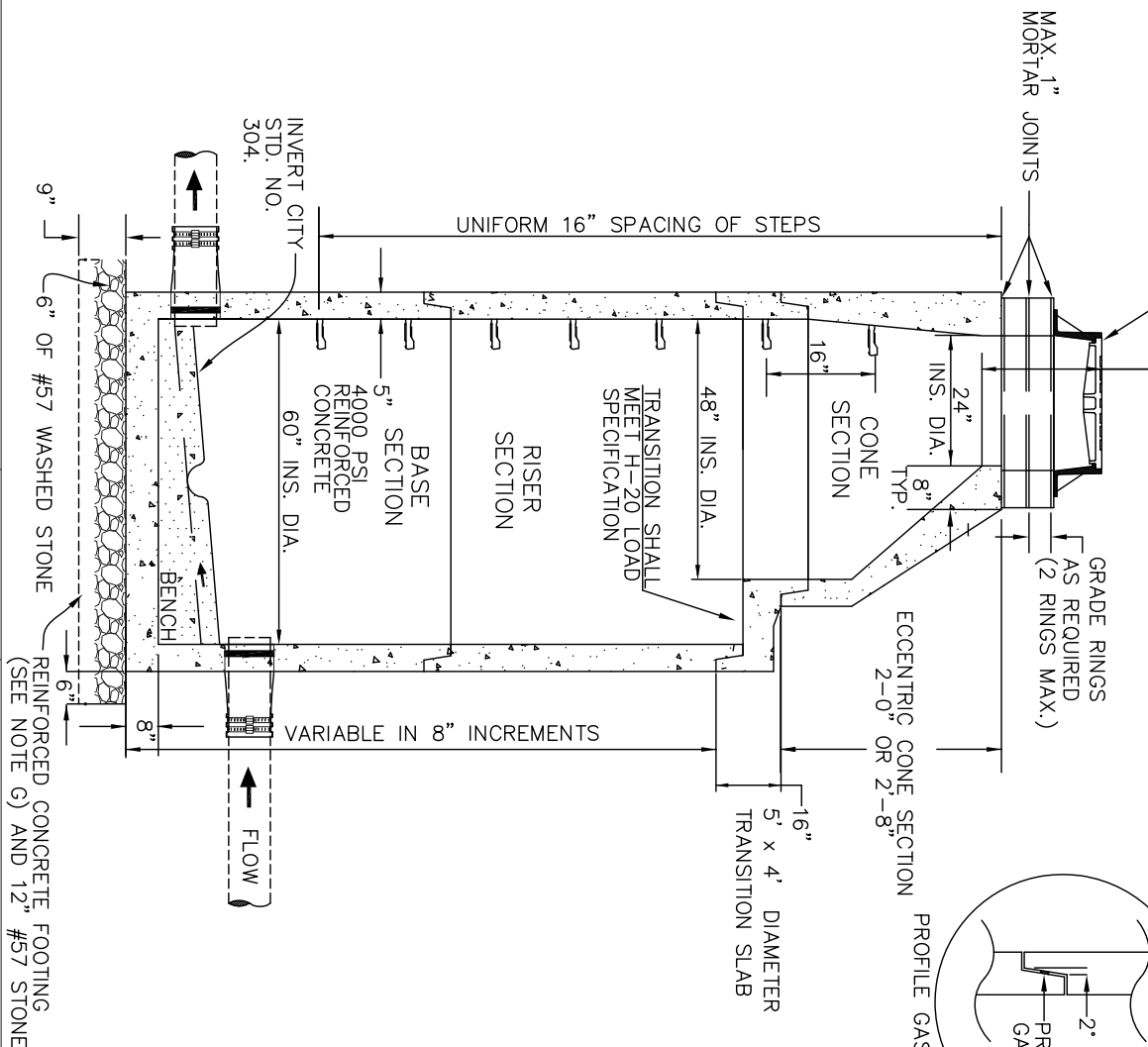
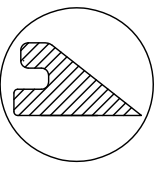


RING & COVER
CITY STD. NO. 307.

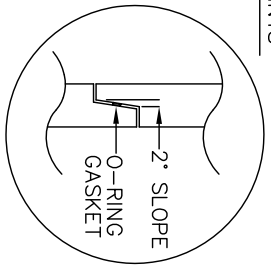
19" MAXIMUM OF
VERTICAL SURFACE



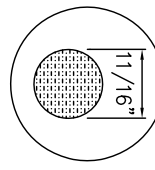
PROFILE GASKET



ENLARGED VIEW OF
PROFILE GASKET
ASTM C361



O-RING GASKET



ENLARGED VIEW
OF O-RING GASKET
ASTM C361

ENLARGED VIEW OF JOINTS

- NOTES:
- A. ALL PRECAST SEWER MANHOLE SECTIONS SHALL MEET THE REQUIREMENTS OF ASTM C-478 AND AASHTO M199. THE PRECAST CONCRETE COMPRESSIVE STRENGTH SHALL BE A MINIMUM OF 4000 PSI.
 - B. ALL MANHOLE STEPS SHALL CONFORM TO CITY STD. NO. 303. OR AN APPROVED EQUAL. STEPS SHALL BE INSTALLED IN LINE WITH THE EFFLUENT OPENING UNLESS OTHERWISE SPECIFIED.
 - C. THE MANHOLE JOINTS SHALL BE SEALED BY A PROFILE GASKET, O-RING GASKET, OR BUTYL RUBBER SEALANT. THE PROFILE GASKET OR THE O-RING GASKET SHALL MEET ASTM C-361. THE BUTYL RUBBER SEALANT SHALL BE 1-1/4" SQUARE AND SHALL CONFORM TO ASTM C-990 AND AASHTO M-198.
 - D. THE LIFT INSERT AND HOLES SHALL BE ACCORDING TO CITY STD. NO. 305. ALL LIFT HOLES SHALL BE COMPLETELY FILLED WITH NON-SHRINK GROUT AFTER MH INSTALLATION.
 - E. ALL PIPE ENTRANCES SHALL CONFORM TO CITY STD. NO. 306. MANHOLE FLEXIBLE PIPE CONNECTORS, IF NEW CONSTRUCTION INVOLVES AN EXISTING PRECAST MANHOLE AND/OR A NEW LINE ENTRANCE, THE HOLE MUST BE CORED AND A WATERTIGHT PIPE CONNECTOR INSTALLED.
 - F. THE MAXIMUM NUMBER OF SEWER SERVICES ALLOWED IN A MANHOLE SHALL BE THREE (3).
 - G. A REINFORCED CONCRETE FOOTING IS REQUIRED WHEN THE MANHOLE IS OVER 12' OR ON A POOR SOIL BASE. THE REINFORCED CONCRETE FOOTING MAY BE POURED OR PRECAST ACCORDING TO CURRENT NCDOT STD. NO 1525.01 SHEET 2 OF 2. THE CONTRACTOR HAS THE OPTION OF PROVIDING AN EXPANDED MANHOLE BASE SECTION AND SETTING THE BASE SECTION ON 12" MIN. #57 STONE WITH NO EXTRA COST TO THE CITY.
 - H. ALL JOINTS ON OUTSIDE OF MANHOLE AND OUTSIDE JOINT AT TOP OF CONE SHALL BE WRAPPED WITH 6" MIN. WIDTH BUTYL ADHESIVE TAPE.

CITY OF HIGH POINT
NORTH CAROLINA
ENGINEERING SERVICES DEPARTMENT
APPROVED: MAY 3, 2007
DIRECTOR

ISSUED 5-3-07	REVISIONS

STANDARD DRAWING FOR

5' DIAMETER SANITARY MANHOLE

FOR SEWER MAINS GREATER THAN OR EQUAL TO 21"

MH_60D/A.DWG

301.00

SHEET 1 OF 1