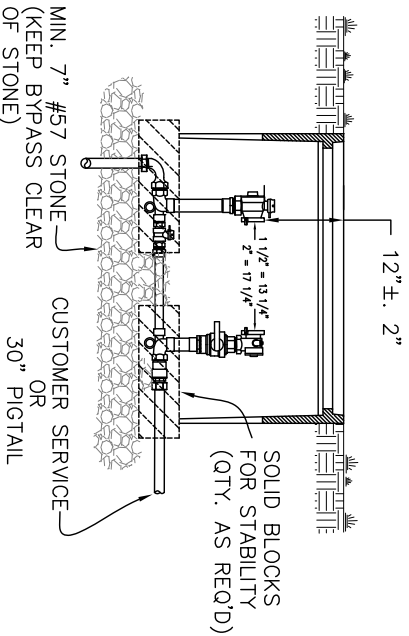


FOR CURRENT SIDEWALK REQUIREMENTS, REFER TO CITY OF HIGH POINT DEVELOPMENT ORDINANCE (CHAPTER 6, 9-6-16(e)).

TOP VIEW

STREET SIDE VIEW



STREET FRONT VIEW

- NOTES:**
- THE CITY SERVICE LATERAL SHALL EXTEND PERPENDICULAR FROM THE WATER MAIN TO THE METER SETTER AND MAINTAIN THE SAME COVER AS REQUIRED FOR THE WATER MAIN. THE ONLY EXCEPTION IS IN A CUL-DE-SAC. IN THIS CASE, ONE HORIZONTAL BEND WILL BE ALLOWED. HOWEVER, THE BEND MUST BE FIELD LOCATED AND SHOWN ON THE AS-BUILTS.
 - ALL WATER TAPS SHALL BE WET TAPS.
 - ALL 1 1/2" AND 2" WATER TAPS REQUIRE DUCTILE IRON, DOUBLE STRAP, SERVICE SADDLES.
 - APPROVED PARTS:
 - 1 1/2" & 2" SERVICE SADDLE:
 - SMITH BLAIR MODEL 313
 - WUELLER DR2A SERIES
 - FORD F202 SERIES
 - ROMAC STYLE #202
 - CORPORATIONS:
 - COMPRESSION
 - 1 1/2": -WUELLER 300 BALL CORP. VALVE
 - B-25008N SERIES
 - A.Y. McDONALD BRASS 74701BT-1 1/2"
 - FORD FB1000-6GNL
 - 2":
 - WUELLER 300 BALL CORP. VALVE
 - B-25008N SERIES
 - A.Y. McDONALD BRASS 74701BT-2"
 - FORD FB1000-7GNL
 - E. FOR RIBBON PAVEMENT ROADS, THE WATER METER BOX AND SETTER SHALL BE LOCATED WITHIN THE GRASS STRIP, WHICH IS LOCATED 2' INSIDE OF THE RIGHT-OF-WAY LINE.
 - F. NO KINKS ALLOWED IN THE SERVICE. ANY KINKED OR DAMAGED TUBING SHALL BE REMOVED AND REPLACED.

CITY OF HIGH POINT
NORTH CAROLINA

ENGINEERING SERVICES DEPARTMENT

APPROVED FEBRUARY 2, 2007

BPK

DIRECTOR

ISSUED 02-02-07

REVISIONS

9-15-10

2-6-14

STANDARD DRAWING FOR

1 1/2" AND 2" SERVICE LINE INSTALLATION (NEW)

FOR 1 1/2" AND 2" WATER SERVICES

1.5_2INSTNEW.DWG

213.00

SHEET 1 OF 1